

Weekly Update

**NOW AVAILABLE:
 FALL 2022 COVID-19
 BOOSTER FOR
 EVERYONE 5+**



[Click here for more information and to locate Fall 2022 COVID-19 Boosters](#)

November 29, 2022


In This Issue:

NEW Vaccine Resources Page 2-3
 NEW Events, Webinars, Town Halls..... Page 4
 LA County Vaccination News & Updates..... Page 5
 External News Headlines..... Page 6


The following guidance is as of **November 29, 2022**. We are working hard to make sure we provide the most accurate information, but please note that the situation is constantly developing so what is shared below is subject to change. Please check www.VaccinateLACounty.com for current information.

Follow/Share LA County Public Health Social Media Posts

**FEVER, COUGH,
 OR A HEADACHE?
 It could be
 COVID-19.**





Get tested to know for sure. Find testing at ph.lacounty.gov/covidtests



COVID-19 and Flu

Not the same virus, but BOTH can cause severe illness and BOTH have life-saving vaccines.

Get vaccinated for the flu & COVID-19 to stay protected.

[Facebook.com/LAPublicHealth](https://www.facebook.com/LAPublicHealth) • [Twitter.com/LAPublicHealth](https://twitter.com/LAPublicHealth)

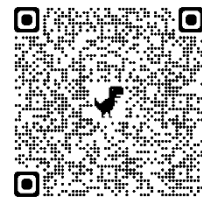
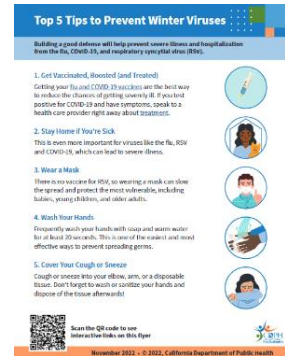
Weekly Update

NEW Vaccine Resources

New CDPH Toolkit Promotes Winter Virus Prevention

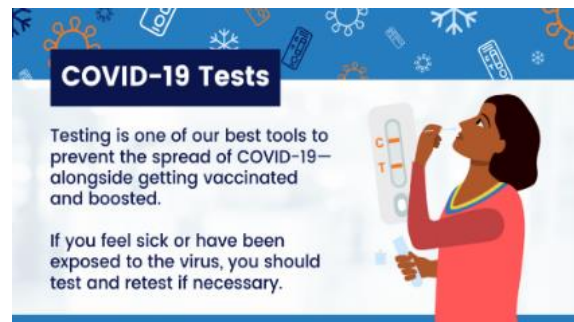
The [California Department of Public Health](#) (CDPH) has created a new [Winter Virus Prevention communications toolkit](#) with social media messages, a fact sheet, and a video with tips for protecting yourself and others from respiratory viruses that are on the rise this winter. [Visit the toolkit](#) to access the following:

- Social media messages: **5 Ways to Protect Yourself and Your Family This Winter.**
- Social media messages: **Symptoms? Stay Home and Test.**
- Fact Sheet: [Five Winter Virus Prevention Tips.](#)
- Video: "[Stay Healthy this Winter](#)" Featuring California State Epidemiologist Dr. Erica Pan.



New At-Home COVID-19 Testing Toolkit from PHCC

The newest [At-Home COVID-19 Testing Toolkit](#) from [Public Health Communications Collaborative](#) (PHCC) provides messaging guidance to help the public understand when to test and how to use at-home tests correctly. Testing is one of the best tools to prevent the spread of COVID-19, alongside getting vaccinated and boosted.



This toolkit offers graphics and sample social copy in English and Spanish to help you address questions about COVID-19 at-home antigen tests in your community.

- [Explore the Testing Toolkit](#)



Weekly Update

National Influenza Vaccination Week is Coming - December 5-9, 2022



From December 5-9, 2022 the CDC will be observing [National Influenza Vaccination Week](#), reminding everyone 6 months and older that there's still time to get a flu vaccine. CDC's NIVW resources, vaccination messages, and activities you can use to share key flu information with your networks are available for review now.



- [Review the 2022 NIVW Digital Media Toolkit](#)

Flu Season is Here – Poster – Unity Consortium

Flu season is here, but it's not too late for teens and young adults to vaccinate. Share this poster from [Unity Consortium](#) to help spread awareness about the importance of getting the flu vaccine.

- [Download the Poster](#)
- [Review Unity Consortium Resources on Vaccines](#)



The Germ-Fighters in Our Corner – Video – Vaccinate Your Family

It's easy to take the protection offered by vaccines for granted, but vaccines have been quietly saving lives and defeating infectious diseases that used to sicken and kill many people every year. [Check out this animated video](#) from [Vaccinate Your Family](#) to help promote vaccinations in your community.



Weekly Update

NEW Events, Webinars, Town Halls

**RSV Briefing with Dr. Nava Yeganeh – Live Stream Event
December 6, 2022 - 10:00am**

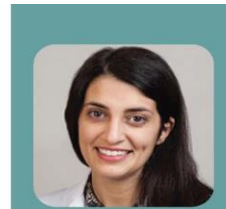
**RSV BRIEFING
WITH DR. NAVA YEGANEH
LIVE STREAM EVENT**

Tuesday, December 6th at 10:00am

Please join us as we discuss respiratory syncytial virus (RSV) in LA County. We will share information about how RSV spreads, who is most vulnerable, and how we can prevent it.

Zoom Link:

<https://us02web.zoom.us/j/89657349981>



Nava Yeganeh MD, MPH
Medical Director of
Vaccine Preventable
Disease Control
Acute Communicable
Disease Control Program



Zoom Link: <https://us02web.zoom.us/j/89657349981>

Vaccination Communication: Inoculating Against Misinformation

December 6, 2022

12:00pm PT

[Register here](#)

Join California Immunization Coalition (CIC) for a dynamic webinar on the threat of vaccine mis- and disinformation on social media, and the urgency for health care organizations and professionals to communicate effectively through social media platforms with trusted messengers. Special guests include Dr. Todd Wolynn, MD, MMM and Dr. Alex McDonald, MD FAAFP CAQSM.



Webinar: Is Polio Coming Back?

December 7, 2022

9:00am PT / 12:00pm ET

[Register here](#)

The Vaccine Education Center (VEC) at Children's Hospital of Philadelphia (CHOP) will present a 1-hour webinar titled [Is Polio Coming Back?](#) beginning at 12:00 p.m. (ET) on December 7. Part of its [Current Issues in Vaccines](#) series, the webinar will feature Paul Offit, MD, director of the VEC.



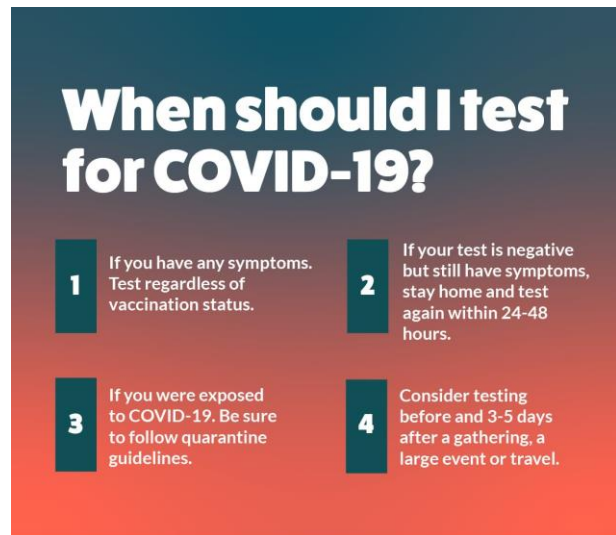
Weekly Update

Los Angeles County Vaccination News & Updates

November 29, 2022 – [Press Release link here](#)

COVID-19 Situational Update

- During the past week, an average of **2,200** cases were reported per day, a **20%** increase from the 7-day average of **1,830** cases reported per day last week and a **128%** increase since November 1st.
- This past week, there was an average of **169** admissions per day, a **43%** increase from the 118 admissions per day last week. Hospital admissions have increased **169%** since November 1.
- The current hospital admissions rate has moved LA County closer to the Medium Community Level threshold. **While LA County has not yet reached the Medium threshold, it is important to acknowledge the impact hospitals are already seeing from elevated transmission of COVID-19 and other respiratory illnesses.**
- DPH is currently reporting an average of **8** deaths per day, slightly lower than the average of 10-12 reported earlier this fall.
- As of November 24, LA County case rate is 144 new cases per 100,000 individuals – up from 86 cases per 100,000 just two weeks ago. **LA County remains in the Low Community Level** using the Centers for Disease Control’s Community Levels framework.
- **To help reduce transmission, it is strongly recommended that everyone wear a well-fitting respirator mask in indoor public spaces.** This includes when using public transit such as buses, ride shares, taxis and medical transport.
- **It is also strongly recommended that everyone be up-to-date with their vaccines.** All residents age 5 and older are urged to get the new updated Fall COVID-19 booster if it has been at least 2 months since their last COVID vaccine.
- **The updated Fall COVID-19 boosters are readily available at Public Health sites, pharmacies, and other locations across the county.** To find a vaccination location near you, please visit www.VaccinateLACounty.com.



When should I test for COVID-19?

- 1** If you have any symptoms. Test regardless of vaccination status.
- 2** If your test is negative but still have symptoms, stay home and test again within 24-48 hours.
- 3** If you were exposed to COVID-19. Be sure to follow quarantine guidelines.
- 4** Consider testing before and 3-5 days after a gathering, a large event or travel.

For information & to find COVID-19 testing, visit COVID19.LACounty.gov/Testing



Weekly Update

External News Headlines

[AP: After A Year, Omicron Still Driving COVID Surges And Worries](#)

A year after omicron began its assault on humanity, the ever-morphing coronavirus mutant drove COVID-19 case counts higher in many places just as Americans gathered for Thanksgiving. (Ungar, 11/25)

[ABC News: Latest COVID Vaccine Will Help People 'Move On' From The Pandemic, White House's Jha Says](#)

With the Biden administration urging people to get both a COVID-19 booster and a flu shot as soon as possible, the White House's Dr. Ashish Jha said Sunday that updated vaccinations will help people "move on" from the pandemic. (MacPherson, 11/27)

[Los Angeles Times: Flu Shots Encouraged In Communities Of Color](#)

Since October, California has had 17 flu deaths, according to the state Department of Public Health. For weeks, public health officials have been bracing for a sickly winter that includes the alarming early start of flu season, rising COVID-19 cases and a surge of cases of respiratory syncytial virus, known as RSV. (Evans, 11/26)

[NBC News: Is It Covid, Flu Or RSV? Chart Compares Differences In Symptoms](#)

Around 76% of U.S. hospital inpatient beds are full, according to data from the Department of Health and Human Services. Pediatric beds are at a similar level, though six states have 90% or more of their pediatric beds full, according to an NBC News analysis of HHS data. (Bendix, 11/24)

[AP: WHO, CDC: A Record 40 Million Kids Miss Measles Vaccine Dose](#)

The WHO and CDC said continued drops in vaccination, weak disease surveillance and delayed response plans due to COVID-19, in addition to ongoing outbreaks in more than 20 countries, mean that "measles is an imminent threat in every region of the world." (11/23)

[NBC News: It's Not Just Covid. Flu And RSV Mean Masks Need To Come Back.](#)

This "triple-demic" of flu, Covid and RSV is a reminder that even as the pandemic ends, the threat of seasonal respiratory viruses remains. Thankfully, our toolkit for tackling them is similar to what works to suppress Covid alone, starting with the most basic and flexible level of protection: masking. (Abdullah Shihpar, William Goedel and Abigail Cartus, 11/27)

Editor:

Kimberly A. Cooper, MA
Staff Analyst, Liaison